

2008 年度 普連土学園中学入試 (3 次) 算数解答

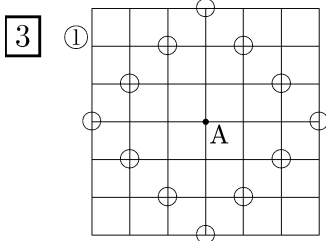
1 (1) 9.6

(2) 16

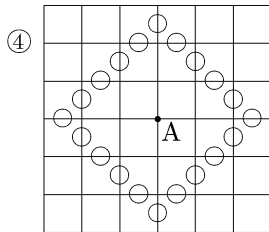
(3) $\frac{1}{3}$

2 (1) $11\frac{1}{9}$ m

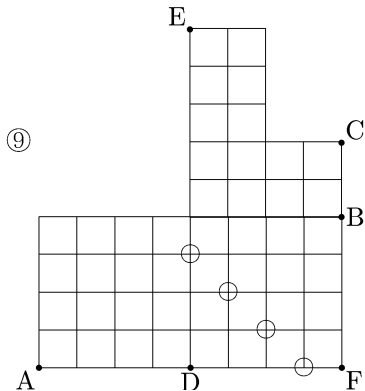
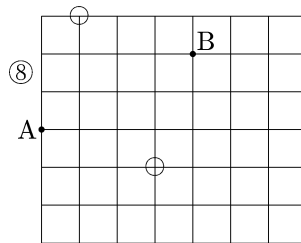
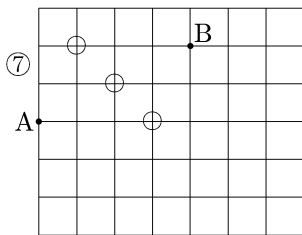
(2) 25cm^2



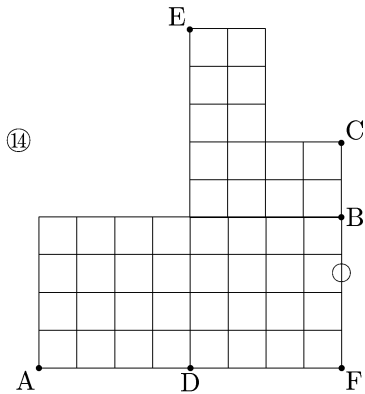
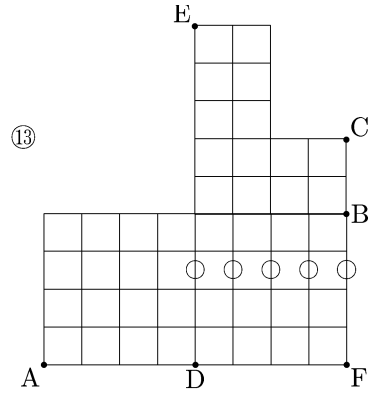
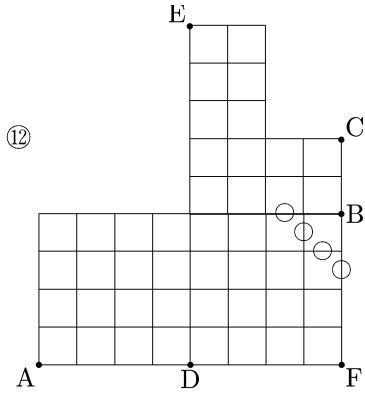
②...12(個), ③...40(個)



⑤...20(個), ⑥...100(個)



⑩...7(秒後), ⑪...10.5(秒後),



- 4 ①…(3, 1, 7), ②…(5, 2, 9) (①と②は順不同), ③…4, ④…ウ,
 ⑤…1, 2, 3が同じ組の(とき), ⑥…4,
 ⑦…解答例 A(1, 2, 3, 4)
 B(5, 6, 7, 8)
 C(9, 10, 11, 12) 1, 2, 3, 4が同じ組に入っていればよい
 ⑧…4(通り), ⑨…10(通り) ⑩…1(枚), ⑪…2(枚), ⑫…6(通り),
 ⑬…10(通り), ⑭…60(通り)
 ⑮…A(1, 2, △, △)
 B(3, 4, △, △)
 C(5, 6, △, △) △は7~12の数が入ればよい
 ⑯…B, ⑰…B ⑱…1, 4, 5, 6, ⑲…3, ⑳…6, 7, 8, ㉑…3(個), ㉒…8,
 ㉓…10
 ㉔…A(1, 5, 6, 7)
 B(2, 3, 4, 10)
 C(8, 9, 11, 12)